



RomanBeauty
RM-MINI18



RomanBeauty
RM-MINI01



RomanBeauty
RM-MINI02



RomanBeauty
RM-MINI12



RomanBeauty
RM-MINI09B



RomanBeauty
RM-MINI22

Romanbeauty®

27

**MINI
Series**

RomanBeauty
RM-MINI11



28



RomanBeauty
RM-MINI10R





RomanBeauty
RM-C24S



RomanBeauty
RM-C24



RomanBeauty
RM-C37/37M



RomanBeauty
RM-C37L

RomanBeauty
RM-C62



24.5CM



RomanBeauty
RM-MINI27/RM-399



RomanBeauty
RM-C38

30

RomanBeauty
RM-C24S

- Silicon comb, soft and more easy to attract the hair.
- Ceramic, a natural source of negative ions and far infrared heat, eliminates frizz and seals in moisture, leaving hair smooth and shiny.
- Simple ON/OFF switch
- The iron's cool tip makes it easy to hold and manipulate.
- Ergonomic: lightweight and comfortable to use.
- Safety and energy-efficient feature-the iron auto shuts-off after 60 minutes of inactivity.
- Extra-long 8.2' (2.5m) 360° swivel power cord.
- Heats up to 410°F (210°C).
- 2 sizes available: 26mm, 32mm.

RomanBeauty
RM-C24

- Ceramic, a natural source of negative ions and far infrared heat, eliminates frizz and seals in moisture, leaving hair smooth and shiny.
- 4 light, LED temperature display.
- Solid nylon bristles glide through hair with ease and grip hair for better styling results.
- The iron's cool tip makes it easy to hold and manipulate.
- Ergonomic: lightweight and comfortable to use.
- Safety and energy-efficient feature-the iron auto shuts-off after 60 minutes of inactivity.
- Extra-long 8.2' (2.5m) 360° swivel power cord.
- Heats up to 410°F (210°C).
- 2 sizes available: 26mm, 22mm.

RomanBeauty
RM-C37/C62

- Ceramic, a natural source of negative ions and far infrared heat, eliminates frizz and seals in moisture, leaving hair smooth and shiny.
- 4 light, LED temperature display.
- Solid nylon bristles glide through hair with ease and grip hair for better styling results.
- The iron's cool tip makes it easy to hold and manipulate.
- Ergonomic: lightweight and comfortable to use.
- Safety and energy-efficient feature-the iron auto shuts-off after 60 minutes of inactivity.
- Extra-long 8.2' (2.5m) 360° swivel power cord.
- Heats up to 410°F (210°C).

RomanBeauty
RM-MINI27/399/C38



- Ceramic, a natural source of negative ions and far infrared heat, eliminates frizz and seals in moisture, leaving hair smooth and shiny.
- Variable temperature control.
- Solid nylon bristles glide through hair with ease and grip hair for better styling results.
- The iron's cool tip makes it easy to hold and manipulate.
- Ergonomic: lightweight and comfortable to use.
- Safety and energy-efficient feature-the iron auto shuts-off after 60 minutes of inactivity.
- Extra-long 8.2' (2.5m) 360° swivel power cord.
- Heats up to 410°F (210°C).





RomanBeauty
RM-C30



RomanBeauty
RM-C40



RomanBeauty
RM-C41



RomanBeauty
RM-C43

RomanBeauty
RM-C30/40/41/43

- Ceramic, a natural source of negative ions and far infrared heat, eliminates frizz and seals in moisture, leaving hair smooth and shiny.
- LCD temperature display.
- Solid nylon bristles glide through hair with ease and grip hair for better styling results.
- The iron's cool tip makes it easy to hold and manipulate.
- Ergonomic: lightweight and comfortable to use.
- Safety and energy-efficient feature-the iron auto shuts-off after 60 minutes of inactivity.
- Extra-long 8.2' (2.5m) 360° swivel power cord.
- Heats up to 410°F (210°C).



RomanBeauty
RM-C45

RomanBeauty
RM-C45

- Ceramic, a natural source of negative ions and far infrared heat, eliminates frizz and seals in moisture, leaving hair smooth and shiny.
- LCD temperature display.
- Solid nylon bristles glide through hair with ease and grip hair for better styling results.
- The iron's cool tip makes it easy to hold and manipulate.
- Ergonomic: lightweight and comfortable to use.
- Safety and energy-efficient feature-the iron auto shuts-off after 60 minutes of inactivity.
- Extra-long 8.2' (2.5m) 360° swivel power cord.
- Heats up to 410°F (210°C).



RomanBeauty
RM-C59

RomanBeauty
RM-C59

- Ceramic, a natural source of negative ions and far infrared heat, eliminates frizz and seals in moisture, leaving hair smooth and shiny.
- LCD temperature display.
- Solid nylon bristles glide through hair with ease and grip hair for better styling results.
- The iron's cool tip makes it easy to hold and manipulate.
- Ergonomic: lightweight and comfortable to use.
- Safety and energy-efficient feature-the iron auto shuts-off after 60 minutes of inactivity.
- Extra-long 8.2' (2.5m) 360° swivel power cord.
- Heats up to 410°F (210°C).
- 3 sizes available: 45mm, 35mm, 32mm.





RomanBeauty
RM-C01

- Universal voltage operations.
- Optional ceramic/chrome finish conical barrel for smooth shiny frizz-free.
- Salon high heat for long lasting results variable temperature(80-210°C).
- Settings for every hair type.
- Power: 40W.
- 13 optional sizes (11/13/16/19/22/25/28/32/38/9.5-19/13-25/19-32/25-38mm).
- Auto shut off after 72Min for 50Hz, and 60Min for 60Hz.
- Stylish and modern hairdresser styler with no clamp simply wrap the hair around the barrel for fast, easy curls with no kinks.



RomanBeauty
RM-C01-3

- Universal voltage operations.
- Optional ceramic/chrome finish conical barrel for smooth shiny frizz-free.
- Salon high heat for long lasting results variable temperature(80-210°C).
- Settings for every hair type.
- Power: 40W.
- 13 optional sizes (11/13/16/19/22/25/28/32/38/9.5-19/13-25/19-32/25-38mm).
- Auto shut off after 72Min for 50Hz, and 60Min for 60Hz.
- Stylish and modern hairdresser styler with no clamp simply wrap the hair around the barrel for fast, easy curls with no kinks.



RomanBeauty
RM-64

- Ceramic& tourmaline coated barrel.
- PTC heater.
- LCD display.
- Heating speed : 180+/-15°C/120S.
- Max temperature: 210C+/-15°C.
- 360 degree swivel cord.
- Auto shut off :60min.
- 4 barrel size available: conical wand,25/28/32mm.
- 100-127V/220-240V.
- V25:45W;25#:65W;28#65W;32#:75W



RomanBeauty
RM-35F

- Ceramic& tourmaline coated barrel.
- PTC heater.
- LCD display.
- Heating speed : 180+/-15°C/120S.
- Max temperature: 210C+/-15°C.
- 360 degree swivel cord.
- Auto shut off :60min.
- 4 barrel size available: conical wand,25/28/32mm.
- 100-127V/220-240V.
- V25:45W;25#:65W;28#65W;32#:75W



RomanBeauty
RM-C01-V

- Universal voltage operations.
- Optional ceramic/chrome finish conical barrel for smooth shiny frizz-free.
- Salon high heat for long lasting results variable temperature(80-210°C).
- Settings for every hair type.
- Power: 40W.
- 13 optional sizes (11/13/16/19/22/25/28/32/38/9.5-19/13-25/19-32/25-38mm).
- Auto shut off after 72Min for 50Hz, and 60Min for 60Hz.
- Stylish and modern hairdresser styler with no clamp simply wrap the hair around the barrel for fast, easy curls with no kinks.



RomanBeauty
RM-C01-X

- Universal voltage operations.
- Optional ceramic/chrome finish conical barrel for smooth shiny frizz-free.
- Salon high heat for long lasting results variable temperature(80-210°C).
- Settings for every hair type.
- Power: 40W.
- 13 optional sizes (11/13/16/19/22/25/28/32/38/9.5-19/13-25/19-32/25-38mm).
- Auto shut off after 72Min for 50Hz, and 60Min for 60Hz.
- Stylish and modern hairdresser styler with no clamp simply wrap the hair around the barrel for fast, easy curls with no kinks.



RomanBeauty
RM-62

- Ceramic& tourmaline coated barrel.
- PTC heater.
- LCD display.
- Heating speed : 180+/-15°C/120S.
- Max temperature: 210C+/-15°C.
- 360 degree swivel cord.
- Auto shut off :60min.
- 4 barrel size available: conical wand,25/28/32mm.
- 100-127V/220-240V.
- V25:45W;25#:65W;28#65W;32#:75W



RomanBeauty
RM-C20A/B

- MCH heater.
- Sol gel titanium/ceramic barrel provides a friction free glide.
- Deep curve for luxurious waves.
- Ceramic heater for instant recovery.
- LCD temperature settings-up to 230°C/445°F.
- Digital Ionic technology emits millions of negative ions.



RomanBeauty
RM-C08

- Ceramic& tourmaline coated barrel.
- PTC heater.
- LCD display.
- Heating speed : 180+/-15°C/120S.
- Max temperature: 210C+/-15°C.
- 360 degree swivel cord.
- Auto shut off :60min.
- 4 barrel size available: conical wand,25/28/32mm.
- 100-127V/220-240V.
- V25:45W;25#:65W;28#65W;32#:75W



RomanBeauty
RM-C17

- Universal voltage operations.
- Optional ceramic/chrome finish conical barrel for smooth shiny frizz-free.
- Salon high heat for long lasting results variable temperature(80-210°C).
- Settings for every hair type.
- Power: 40W.
- 13 optional sizes (11/13/16/19/22/25/28/32/38/9.5-19/13-25/19-32/25-38mm).
- Auto shut off after 72Min for 50Hz, and 60Min for 60Hz.
- Stylish and modern hairdresser styler with no clamp simply wrap the hair around the barrel for fast, easy curls with no kinks.



RomanBeauty
RM-69-V30

- Ceramic& tourmaline coated barrel.
- PTC heater.
- LCD display.
- Heating speed : 180+/-15°C/120S.
- Max temperature: 210C+/-15°C.
- 360 degree swivel cord.
- Auto shut off :60min.
- 4 barrel size available: conical wand,25/28/32mm.
- 100-127V/220-240V.
- V25:45W;25#:65W;28#65W;32#:75W



RomanBeauty
RM-C17

- Universal voltage operations.
- Optional ceramic/chrome finish conical barrel for smooth shiny frizz-free.
- Salon high heat for long lasting results variable temperature(80-210°C).
- Settings for every hair type.
- Power: 40W.
- 13 optional sizes (11/13/16/19/22/25/28/32/38/9.5-19/13-25/19-32/25-38mm).
- Auto shut off after 72Min for 50Hz, and 60Min for 60Hz.
- Stylish and modern hairdresser styler with no clamp simply wrap the hair around the barrel for fast, easy curls with no kinks.



- Interchangeable barrel
- Ceramic barrel to neutralize static and leave hair shiny.
- Tapered barrel creates natural-looking, varied curls.
- Slim and ergonomic design for easy use.
- Dual voltage (110-240V) operations.
- On/OFF switch.
- Different barrel size for choice.

RomanBeauty
RM-C11



- LCD temperature display.
- Professional dual MCH heater, fast heat up and quickly heat recover.
- Universal voltage operations.
- Optional ceramic/chrome finish conical barrel for smooth shiny frizz-free curls 230°C.
- Settings for every hair type.
- Different barrel size for choice.
- Auto shut off after 60Min.
- Stylish and modern hairdresser styler with no clamp simply wrap the hair around the barrel for fast.
- Easy curls with no kinks.

RomanBeauty
RM-C22



RomanBeauty
RM-C06

- Interchangeable barrel
- Ceramic barrel to neutralize static and leave hair shiny.
- Tapered barrel creates natural-looking, varied curls.
- Slim and ergonomic design for easy use.
- Dual voltage (110-240V) operations.
- On/OFF switch.
- Different barrel size for choice.



- Interchangeable barrel
- Ceramic barrel to neutralize static and leave hair shiny.
- Tapered barrel creates natural-looking, varied curls.
- Slim and ergonomic design for easy use.
- Dual voltage (110-240V) operations.
- On/OFF switch.
- Different barrel size for choice.

RomanBeauty
RM-C33



RomanBeauty
RM-02



RomanBeauty
RM-05



RomanBeauty
RM-08



RomanBeauty
RM-V6888A



RomanBeauty
RM-23



RomanBeauty
RM-25

RomanBeauty
Professional Hair Straightener

- MCH heater.
- Korean Intelligent temperature control technology.
- IRT technology (Instant Reaction technology).
- Programmable Over-Heat Protection.
- Ultra fast heat up&heat recover.
- Dual safety control.
- Universal voltage.
- Digital FND display (120°C-230°C).
- Sleep mode: Auto go into idle mode for saving energy without using in 30 Min..
- Floating plates function for perfect straightening and curling.
- Plate size: 24*90mm, 110*24mm, others.



RomanBeauty
RM-15



RomanBeauty
RM-30



RomanBeauty
RM-17



RomanBeauty
RM-33



RomanBeauty
RM-27



RomanBeauty
RM-34

RomanBeauty
Professional Hair Straightener

- LCD temperature display.
- Dual voltage (120-240V) operations.
- Advanced ceramic heat technology, quickly heat-up and quickly lost-heat recover.
- Auto shut-off after one hour for 60Hz~110V/72 minutes for 50Hz~220V.
- Titanium provides light weight strength and durability.
- Max Temperature: 230°C/445°F.
- 9 feet with 360 degree swivel cord.
- Thin housing & floating plate design allows you not just straighten, but also to create waves, curls, flips, volume, and more styles all with one styler.



RomanBeauty
RM-39



RomanBeauty
RM-40



RomanBeauty
RM-53



RomanBeauty
RM-54



RomanBeauty
RM-55



RomanBeauty
RM-56

RomanBeauty Professional Hair Straightener

- LCD temperature display.
- Dual voltage (120-240V) operations.
- Advanced ceramic heat technology, quickly heat-up and quickly lost-heat recover.
- Auto shut-off after one hour for 60Hz~110V/72 minutes for 50Hz~220V.
- Titanium provides light weight strength and durability.
- Max Temperature: 230°C/445°F.
- 9 feet with 360 degree swivel cord.
- Thin housing & floating plate design allows you not just straighten, but also to create waves, curls, flips, volume, and more styles all with one styler.



RomanBeauty
RM-61



RomanBeauty
RM-61



RomanBeauty
RM-73L



RomanBeauty
RM-73



RomanBeauty
RM-75



RomanBeauty
RM-76

RomanBeauty Professional Hair Straightener(MCH)

MCH ceramic heating element is a new type of high efficient environmental protection and energy saving ceramic heating elements, PTC ceramic heater, compared with the same heating cases 20 ~ 30% power saving effect.

- Energy saving, high thermal efficiency, the unit heat consumption than the PTC can save 20 ~ 30%.
- Security is not charged surface, insulation performance is good, can endure the withstand voltage of 4500V/ 1s test, no breakdown, leakage current < 0.5 mA.
- Resistance to temperature change is linear, can control temperature by controlling the resistance easily.
- No power attenuation using long time.
- Warming fast: heating element 500W power launched 20s temperature is above 600 °C; Its components rated power started more than 10 s temperature is 200 °C.
- Safety, the halogen-light.
- Heat uniform consistency, and high power density, or 50W/cm².
- Environmental protection: no lead, cadmium, mercury, hexavalent chromium, polybrominated biphenyls (PCBS), polybrominated diphenyl ether and other harmful substances, in full compliance with eu environmental requirements.



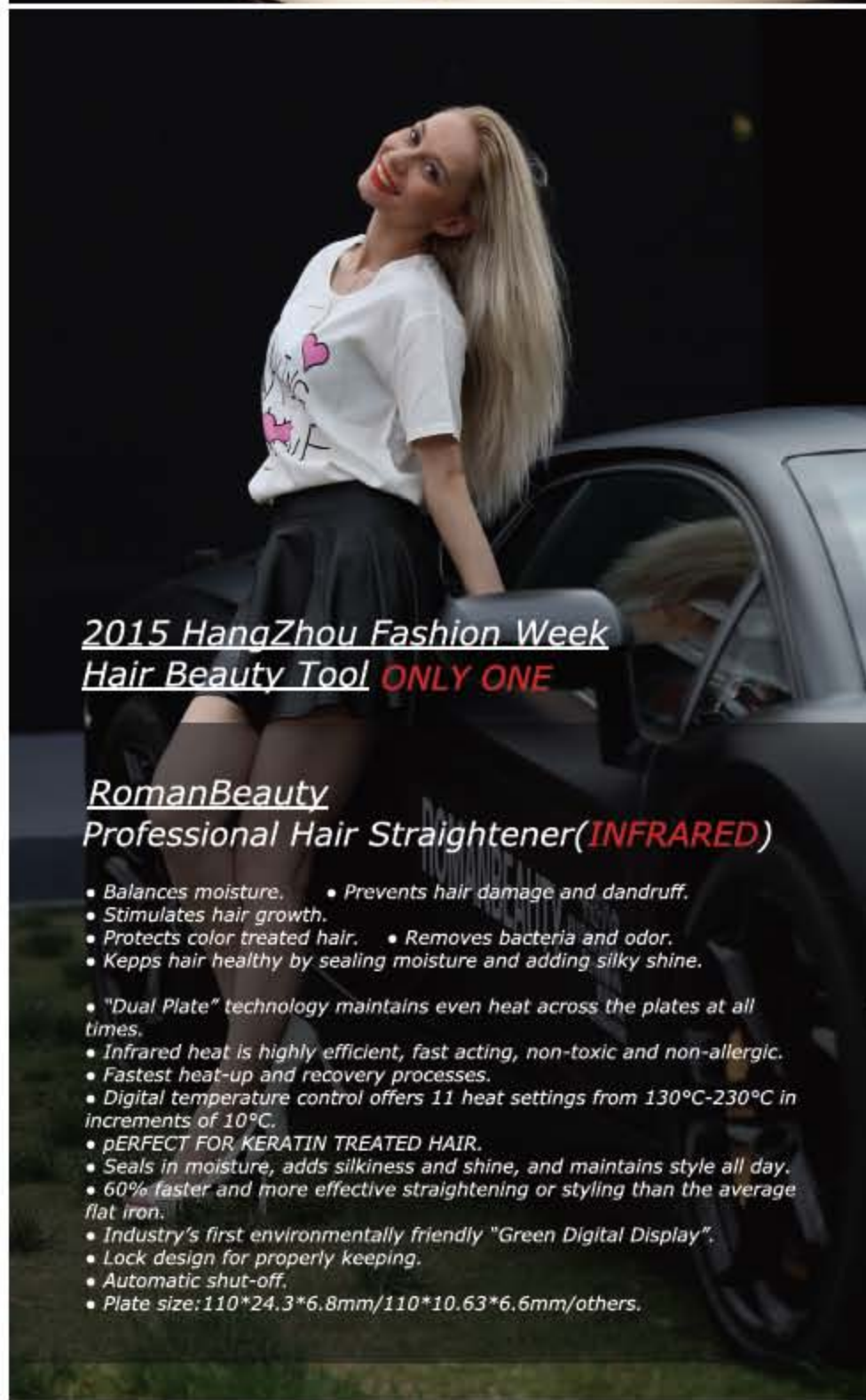
RomanBeauty
RM-41



RomanBeauty
RM-66



RomanBeauty
RM-68



2015 HangZhou Fashion Week
Hair Beauty Tool **ONLY ONE**

RomanBeauty
Professional Hair Straightener(INFRARED)

- Balances moisture.
- Stimulates hair growth.
- Protects color treated hair.
- Keeps hair healthy by sealing moisture and adding silky shine.
- Prevents hair damage and dandruff.
- Removes bacteria and odor.
- "Dual Plate" technology maintains even heat across the plates at all times.
- Infrared heat is highly efficient, fast acting, non-toxic and non-allergic.
- Fastest heat-up and recovery processes.
- Digital temperature control offers 11 heat settings from 130°C-230°C in increments of 10°C.
- pERFECT FOR KERATIN TREATED HAIR.
- Seals in moisture, adds silkiness and shine, and maintains style all day.
- 60% faster and more effective straightening or styling than the average flat iron.
- Industry's first environmentally friendly "Green Digital Display".
- Lock design for properly keeping.
- Automatic shut-off.
- Plate size: 110*24.3*6.8mm/110*10.63*6.6mm/others.



尚,在发生



RomanBeauty
RM-80



RomanBeauty
RM-79



RomanBeauty
RM-82



RomanBeauty
RM-83





8872



8891



45



46

